

PRT60

PRESS FASTER FOR MORE PRODUCTIVITY

PRESS LONGER FOR LESS DRYING TIME

BRING YOUR WASHING SYSTEM TO A WHOLE NEXT LEVEL



PRESS IN TURBO WITH PRT60

Productivity, reliability & efficiency

Discover the advantages of the market leader in water extraction

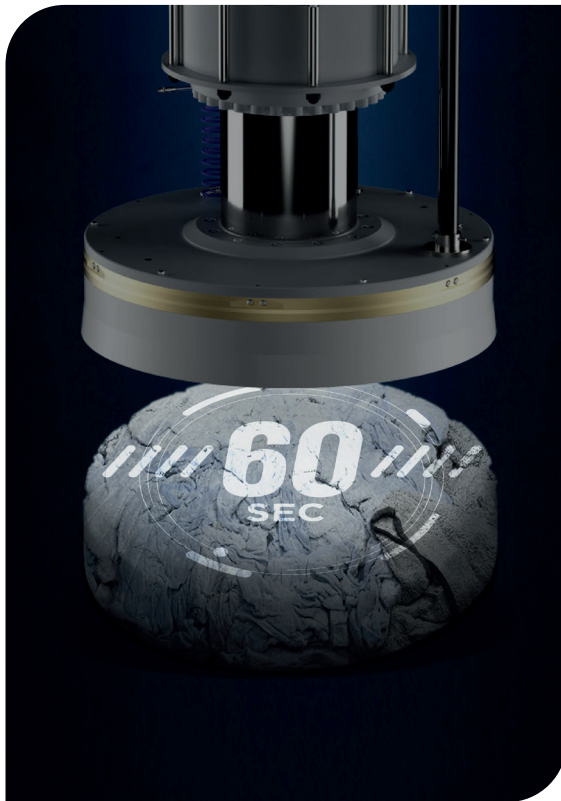
GIRBAU

PRT60

30 SECONDS FASTER THAN THE COMPETITON.

The water extraction press is a critical step in the washing area, determining the cycle time of the tunnel washer and, therefore, the production capacity of the laundry.

A 30-second faster pressing cycle can result in a 33% increase in production capacity or a reduction in the drying time required, saving more than 2.5 kWh per batch of linen. This, along with flexible programming to handle all types of linen gently and unmatched reliability to ensure more than 30 years of service, is what makes the PRT60 unique.

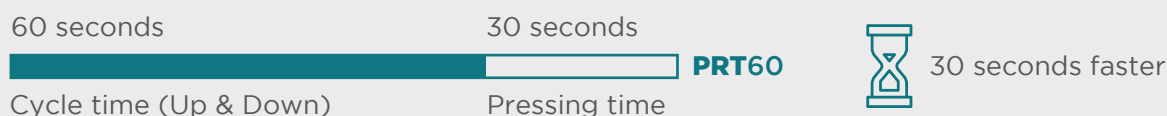


- Speed
- Versatility
- Reliability
- Safety
- Usability
- Visibility
- Water recovery
- Adaptability



The PRT60 is 30 seconds faster with a cycle time of only 60 seconds, combined with an additional 30 seconds of pressing time, while most conventional presses on the market take 90 seconds per cycle.

01. Productivity



50 kg

+ Non turbo presses: **1.500 kg/h**
+ PRT60: **2.000 kg/h**



60 kg

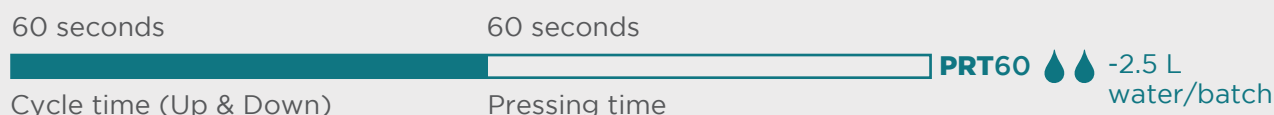
+ Non-turbo presses: **1.800 kg/h**
+ PRT60: **2.400 kg/h**

+33%

Increased production capacity

Thanks to its turbo cycle, each batch of exits the tunnel washer 30 seconds faster. As a result, production capacity of a tunnel batch washer can be increased by 33%, making the PRT60 a perfect match for long tunnel washers programmed with short cycle times to achieve higher productions.

02. Efficiency



50 kg

60 kg



2 - 2.5 min.

-2.5kWh

Required in the drying process of each batch of linen

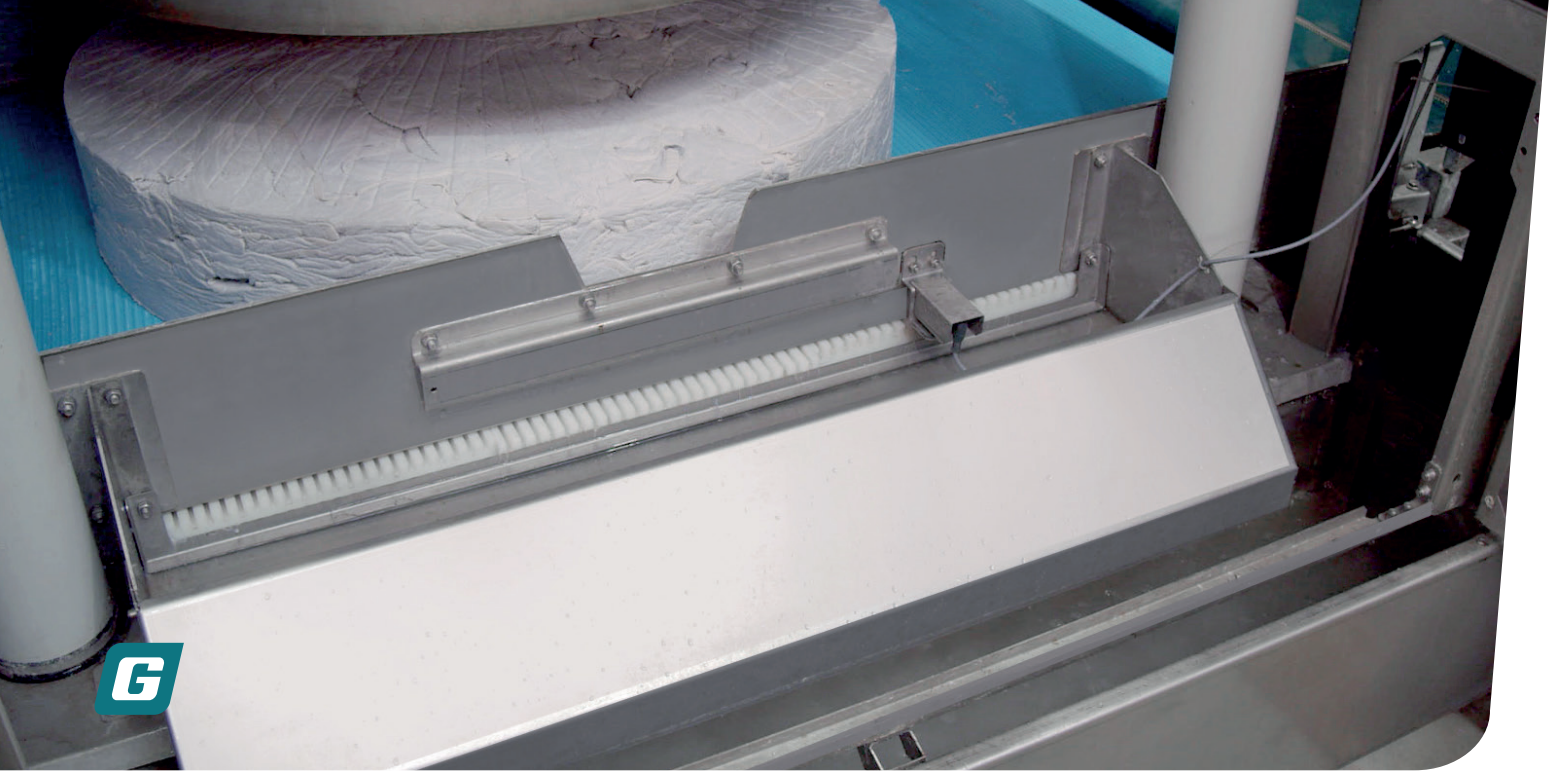
Instead of going 30 seconds faster, operators can choose to maintain maximum pressure on the linen for an additional 30 seconds. This allows more water to be mechanically extracted, significantly reducing drying time. These savings can be made on tunnel batch washers with cycle times between 2 and 2.5 minutes, resulting in savings over 2.5kWh per load.

For laundries operating 3,000 hours per year, and with an average gas consumption of 1.1kWh/ liter evaporated in the dryers, the PRT60 can deliver savings of up to 35,000€ annually per tunnel washer.



More pressing = Less drying





Versatility

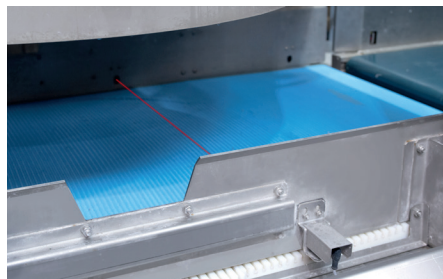
The PRT60 ensures a gentle treatment of every type of linen

The PRT60 is designed with flexible and adjustable programs to handle both flat linen and garments gently and continuously, preventing damage or bursting.

- 40 bar of maximum pressure.
- 5 differentiated phases in each program to adapt the pressing cycle to each type of linen.
- Several programmable non-pressing movements to release the air trapped inside of the garments.
- Up to 3 cake release shakes to ensure a continuous performance.

12 Synthetic					
Tamping (Press-Release-Backward)	0 / 20 cycles	0 / 20 s	0 / 2 s		
Phase 1	0.5 / 6.0 bar/s	20.0 / 40.0 bar	2 / 120 s		
Phase 2	0.5 / 6.0 bar/s	25.0 / 40.0 bar	4 / 120 s		
Phase 3	0.5 / 6.0 bar/s	30.0 / 40.0 bar	20 / 120 s		
Phase 4	6.0 / 6.0 bar/s	40.0 / 40.0 bar	5 / 120 s		
Optimization time	0 / 99 s				
TRT pump time	45 / 120 s	Rinse pump time	60 / 120 s	(333)	

Differentiated phases per program



Cake release sensor



High-pressure programs for flat linen



Flexible programs for garments

WHY 40 BAR?

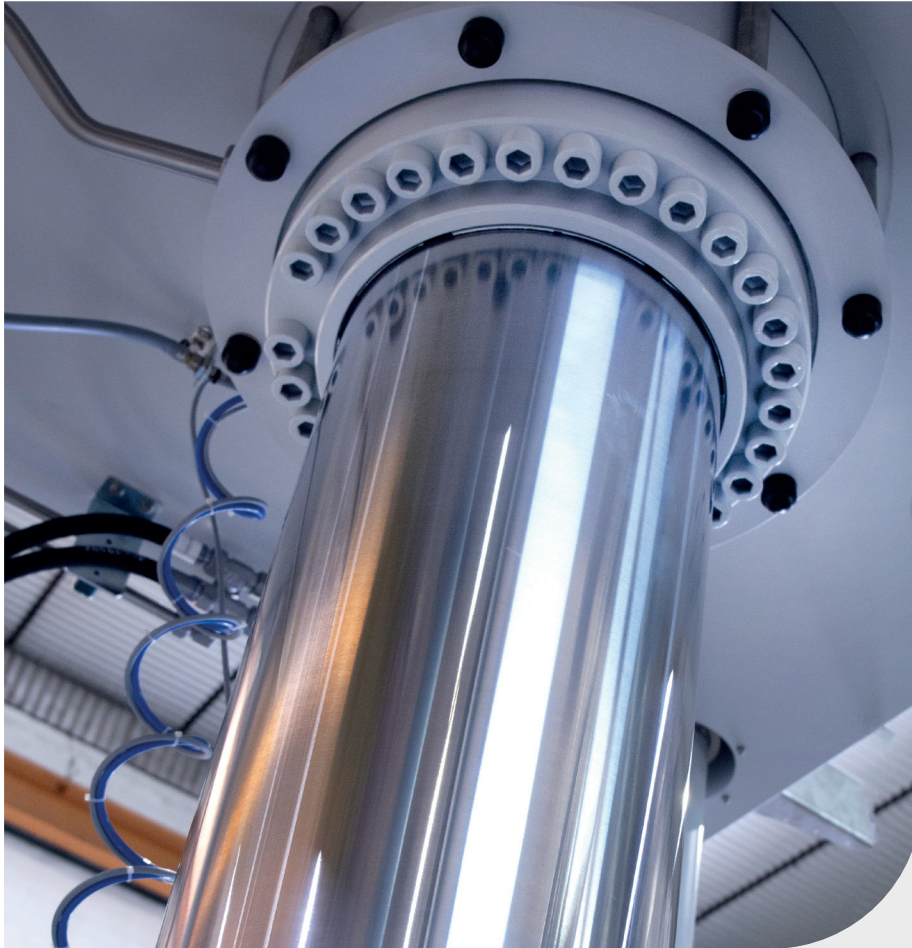
40 bar is the most optimal pressure to ensure maximum water extraction, while treating the linen gently, avoiding damage.

In most cases, linen is pressed below 40 bar to ensure quality results, while maximum pressure of 40 bar is used for special types of linen such as blankets. A higher-pressure range would result in unnecessary extra costs for most laundries.

Reliability

The PRT60 is known for its reliability and robustness. What's more, its design has been tested to last more than 30 years.

Regarding the ejection of the pressed cakes, the PRT60 incorporates a discharge conveyor belt to ensure solid and compact cakes, even with small pieces and polyester linen.



14 tons

Operating weight

+30 years

Service life

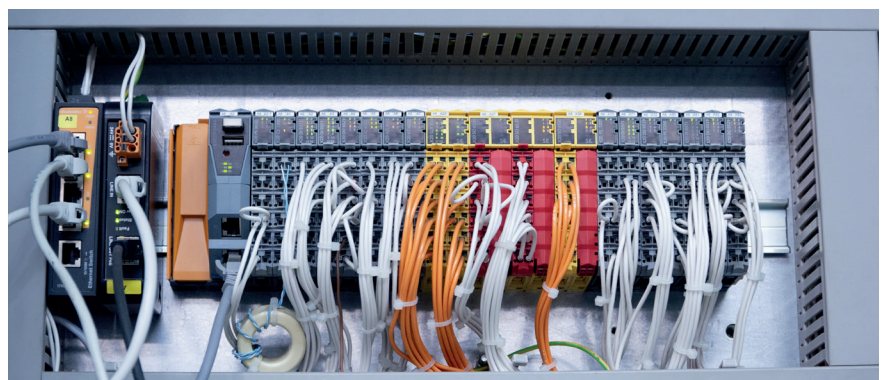


Safety



The PRT60 features an enclosed, compact design with multiple covers to safeguard all access points, reducing the risk of injury.

Additionally, it incorporates a specific safety PLC to meet the highest safety standards in the industry.





Usability

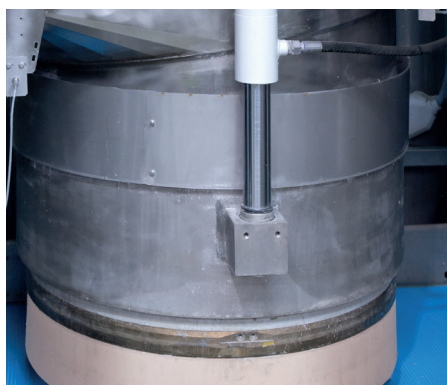
It incorporates an easy-to-use touch screen with a user-friendly interface and interactive icons that help operators understand the status of each pressing cycle.

Moreover, new programs for new customers can be easily set up as needed.



Real-time representation of the different cycle stages

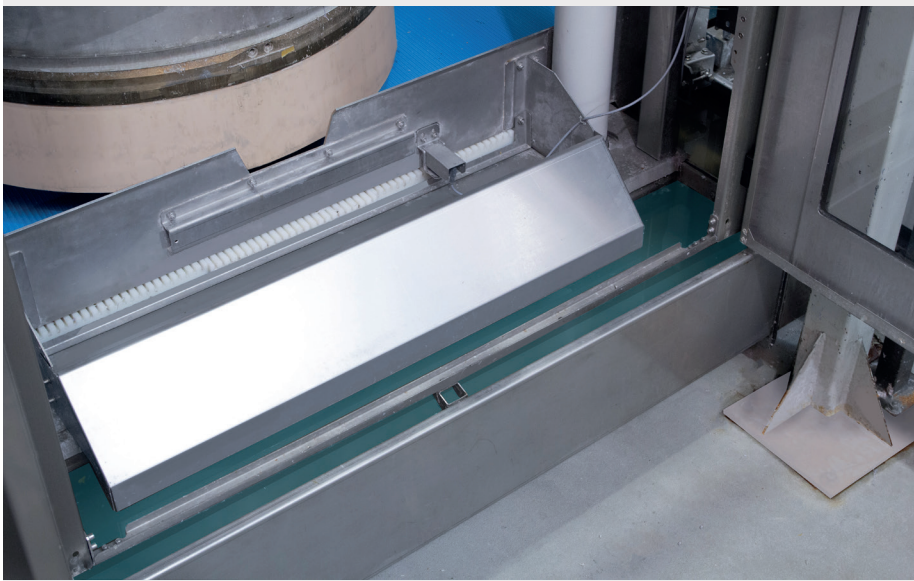
Visibility



With its sleek, aesthetically pleasing design, the PRT60 includes two main front doors with glass windows, providing a clear view of the entire process and all key components.

Water recovery

The PRT60 includes a water recovery tank that collects all the water extracted from the linen during each pressing cycle and reuses it in the next rinse of the batch tunnel washer.



400
LITERS OF CAPACITY

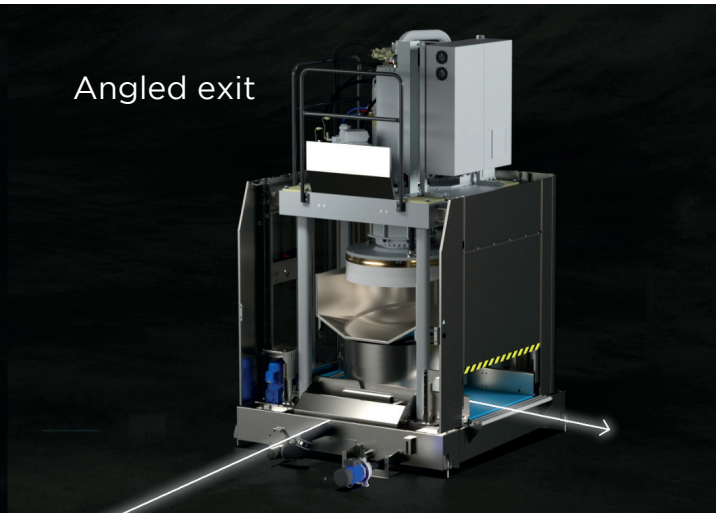
Adaptability

The PRT60 seamlessly integrates with any new or existing tunnel batch washer with a capacity of 50 or 60 kg of linen. It can be configured with two different types of exit to match all spaces and layouts:

In-line exit



Angled exit





Girbau is a multi-national corporation that has cemented its position as one of the leading global groups in the manufacture of innovative solutions for the world of laundry. The goal of Girbau is to create maximum value for its customers, supporting them in their professional growth. The Girbau community supplies simple, dependable solutions that offer its clients profitability, innovation and sustainability.

With more than 60 years of experience as a manufacturer of washing and drying equipment, Girbau provides the most comprehensive offering of commercial, industrial, and self-service laundry solutions in the world to meet your individual productivity and efficiency needs.

We want to provide the service and community you need to make your business special. That takes commitment beyond selling machines, and we're willing to walk the extra mile. And beyond all that, we want to help you care for the environment and innovate for the next generation.

These are tall orders, but Girbau can fill them with your help. Help us take laundry beyond laundry. Get in touch today!



The future is now

GIRBAU.COM



GIRBAU