

---

# ED

---

# SERIES

---

ED260  
ED340  
ED460  
ED660  
ED900  
ED1250  
EDD300  
EDD420

**ECODRYER SERIES**  
Definitive drying

---

**GIRBAU**

# ED series ECODRYER dryers

## INTELLIGENCE WITH EFFICIENCY

ED1250

ED900



ED660

ED460



ED340

ED260



EDD300

EDD420



## ED SERIES THE DEFINITIVE DRYERS FOR YOUR BUSINESS

IN DRYING THE BALANCE LIES IN THE PERFECT TRIANGLE

THE BEST DRYING:



**Advanced, fast and efficient** drying to save you time and money while caring for linen and for the environment.

### PREMIUM PRODUCT

High-performance machines built for intensive use and **minimum maintenance**.

- MAXIMUM USABILITY
- MAXIMUM SAFETY
- MINIMUM MAINTENANCE
- PREMIUM PERFORMANCE

# PREMIUM PERFORMANCE FOR PREMIUM DRYING



## ADVANCED TEMPERATURE CONTROL

Temperature adjustment before and after the drum. Custom drying to suit the fabric, load and time.



## PRECISION MOVEMENTS

Fitted with an inverter to control the speed and the mechanical action of the drum.



## VARIABLE AIR FLOW\*

Fitted with an inverter to adapt the air flow to the drying requirements and those of the installation.

*\*ED900 & ED1250 models*



## LATEST-GENERATION ADAPTABLE USER INTERFACE

Simple and intuitive for basic users or fully adjustable for advanced users, including up to 40 multi-phase programmes.



## NO DRUM BEARING WHEELS

Absence of noise, less maintenance.

*\*Except EDD double tumbler dryers.*



## EFFICIENCY AND COMFORT

Thermal insulation of the unit and the door (double glass) for efficiency and comfort.



## ADVANCED HUMIDITY SENSOR

Efficient programmes without over-drying fabrics.

*\*Except EDD double tumbler dryers.*



## DURABILITY

Stainless steel drum.



## ADAPTABILITY

The door opening direction can be changed on the spot.



## QUALITY TREATMENT OF THE FABRIC



## MINIMUM WEAR ON FABRIC

The **care drum** system used by Girbau on the drums in its washing machines has been transferred to its dryers.

Pressing out the holes in the drum, instead of drilling them out as other manufacturers do, makes all the difference in the treatment of the linen. The result - longer-lasting fabrics.

In turn, advanced rotation control cares for the linen throughout the drying cycle.



## CARESSING YOUR SENSES

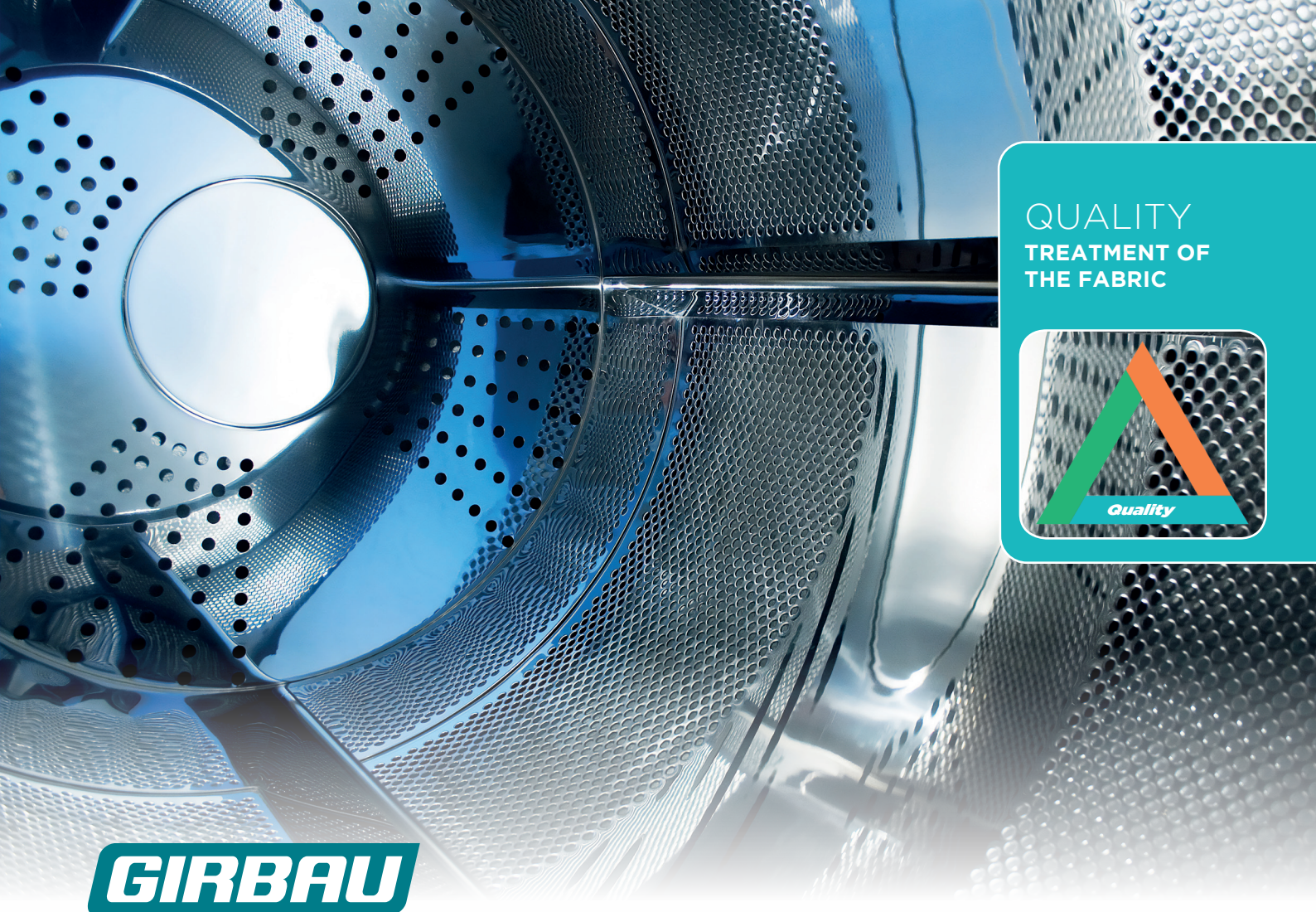
Stroking an article of linen, sensing its fragrance and its softness and fluffiness against the skin, transports us to a world of emotions that we associate with well-being.

A good drying process leads to a sensory and personal experience for your clients, making them view their business in a different and more pleasant way.

Drying is what gives your business its personal touch. How can you insist that the quality of your fabrics is important if you don't give them the pampering they deserve during the drying process?

We invite you to stamp more personality onto your business in an efficient and profitable way. Your clients deserve it, as does your business.





## QUALITY TREATMENT OF THE FABRIC



# GIRBAU



## DELICATE TREATMENT

To ensure the linen is treated gently, the holes in the drum (stainless steel AISI 430) are stamped out rather than drilled. This ensures that the fabric never comes into contact with the sharp edges left by perforated drums.

The absence of welds in the drum makes for a very strong structure while ensuring a gentle treatment for the linen.



## GDRIVE

Girbau's exclusive control and communication system linking the inverter, motor and microprocessor ensures that the whole assembly is properly balanced and has a longer life.

GDrive can be used to control the rotation speed of the drum and the rotation intervals.



## SPEED CONTROL

This function controls the rotation speed of the drum using the GDrive system.

It can be activated in manual or automatic mode. In manual mode the rotation speed of the drum can be varied with the cycle activated, and the temperature and drying time can also be altered while the dryer is running.

In automatic mode, the rotation speed of the drum can be adjusted to suit the residual moisture content of the linen.

## THE SUCCESS OF THE BEST PROCESS

Laundering is a process. A good wash is of little use if not followed by a thorough drying or a good ironing. Girbau has drawn on more than 50 years' experience in laundering to achieve a perfect match for your washers and ironers.

Only if every part of the laundry process is based on efficiency, quality and reliability can a laundry become cost-effective and provide added value for your clients.



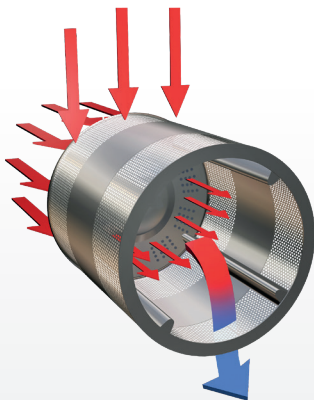
EFFICIENCY  
MINIMUM  
CONSUMPTION  
AND COSTS



## EFFICIENCY GUARANTEE



THE POWER OF  
CROSS FLOW



Directing the flow of air through the linen and making the most of their temperature are key factors in getting the best performance from a dryer.

The combination of a radial and an axial airflow allows air to penetrate between the garments, ensuring optimum drying in short cycle times.

The crossing of the two flows makes cross-drying possible. The air circulates through the linen in the middle of the drum.



HEAT CAPTURE  
TECHNOLOGY

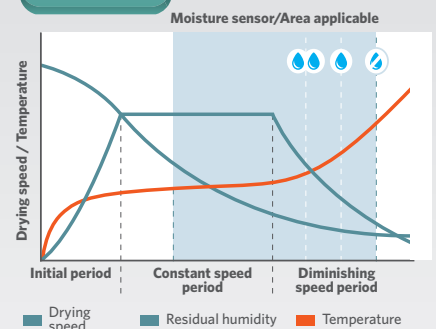


The double glass and double panel door system ensures higher performance to take maximum advantage of heat energy.

There is no leakage of air or heat. The fact that the dryer is not giving off heat makes the work environment pleasant and safe.



MOISTURE  
CONTROL



The residual moisture control system is highly accurate and reliable. Prevents the linen from overdrying and shortens the cycle time.

## PERFORMANCE/ EFFICIENCY/ PRODUCTIVITY

The drying process consumes more energy than any other process in laundering.

Optimising energy use and achieving better results in less time are the key factors that make these dryers an essential ally in reducing running costs.





POWER RATING  
SPEED OF DRYING



## WHEN SIMPLICITY MEANS RELIABILITY

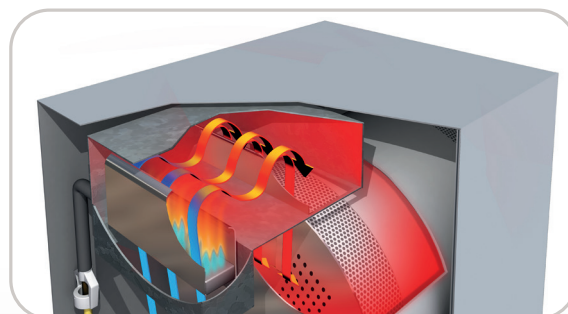
### **SIMPLER, EASIER TO CONTROL AND MORE RELIABLE.**

The ethos behind these dryers is that reliable solutions need not be complex.

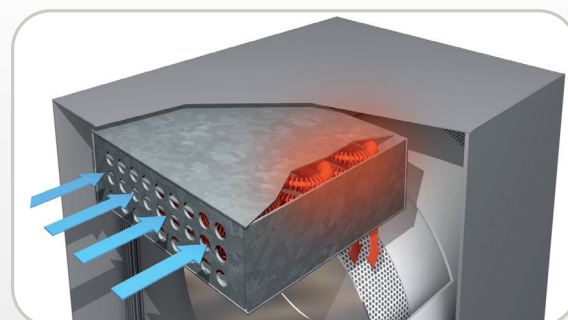
The challenge is to achieve greater reliability with simplicity.

The heating system is one example of this. The reduced size of the burner assembly means that space can be optimised and more power achieved.

### **GAS-HEATED VERSION**

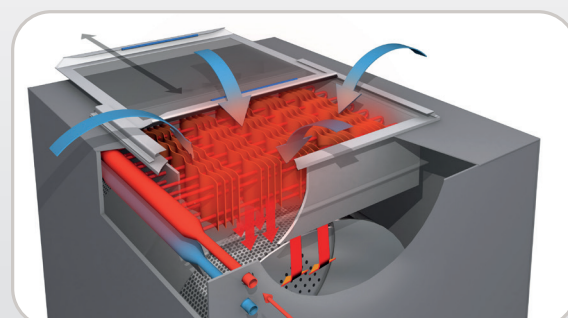


### **ELECTRICALLY- HEATED VERSION**



### **STEAM VERSION OR THERMAL FLUID**

(SEE AVAILABLE MODELS)



PREMIUM  
PRODUCT

**GIRBAU**



## MINIMUM MAINTENANCE

**REDUCING MAINTENANCE MEANS GREATER EFFICIENCY**

### LARGE CAPACITY FILTER

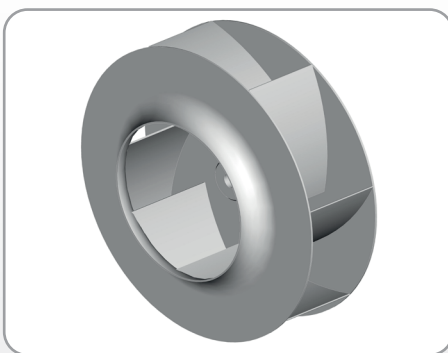
The large capacity filter, the easy accessibility for cleaning and the angle of the filter (which helps to release fibrin), helps to save time on maintenance.

### SPECIFIC FAN

The specially-designed fan with curved blades keeps maintenance to a minimum. The level of ventilation is maintained without reducing performance over time.

### TOTAL ACCESSIBILITY

The total accessibility of the transmission system allows easy, quick maintenance. The toothed belt does not need retightening.



## MAXIMUM SAFETY

### SAFETY WITH THE COOL DOWN SYSTEM

After the program has ended, the system ensures that the dryer and the linen remain at a temperature below the safety temperature in order to prevent any incidents that might arise from the load being left inside.

### FIRE PREVENTION SYSTEM

A system for extinguishing fires arising inside the dryer. It monitors all the temperature sensors, both while the program is running and at rest.



# USABILITY

## PROFESSIONAL CONTROL



The control panel reflects the ethos of Girbau's Inteli control, with a system that streamlines programming and operation. Operators find the system of icons easy to learn. Featuring 10 preset programmes and up to 40 user-specific programmes.

## VERSATILITY

Control can be activated in the Pro version (multi-phase programs, and with the possibility of selecting different temperatures, working modes, drum rotation speeds and intensity and the mechanical intensity in each phase) or in the Easy Use version.

## PRECISION

The display shows the status of the process at all times, informing the user of the time left, the function and the temperature.

## ANTI-WRINKLE

If the linen is left inside the drum once the cycle has ended, the system activates the suction and rotates the drum to prevent the linen from creasing.

## VENDED CONTROL



In the case of the Coin-op version, both the coin box and vending options work with 3 temperature programs: high, medium or low, and with a programmed time cycle. A modifiable program.



**Coin box option:** The dryer incorporates a coin box and can be operated directly by paying with coins on the machine itself. The electronic coin boxes can be programmed to accept different types of coins.



**Vending option:** The dryer can connect to a central payment unit (external start-up system).

# PREMIUM PERFORMANCE



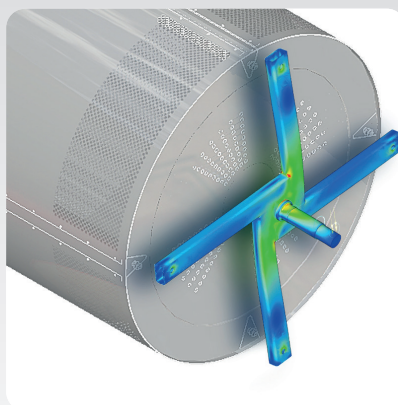
## WET CLEANING READY

The perfect dryer for delicate fabrics and the most sophisticated processes. It incorporates a dual temperature sensor at the air flow inlet and outlet.

The versatility of the control makes it possible to adapt the drying cycle parameters to **Wet Cleaning** processes.

The user can set temperature variations for a particular length of time or even program different spin speeds in the same program.

## SHAFT SUPPORT



There is none of the wear or maintenance associated with support wheels.

At the same time, the **absence of wheels** means that the unit runs very quietly. The drive belt can be accessed easily.

*\*Except EDD double tumbler dryers.*

## ERGONOMIC DESIGN



The wide door makes loading and unloading easy.

The ergonomic design, with easy access and filter cleaning, contributes to operator comfort and increases their output.

ED1250

ED900

PREMIUM  
PRODUCT



**GIRBAU**

## HIGH CAPACITY COMES TO THE ED SERIES

### BIG. IN BOTH SIZE AND FEATURES

The new high-capacity spin dryers share the excellent performance of the other ED models, and incorporate innovative features to ensure best results.

#### OPTIONS FOR ALL

Heating systems available to suit all needs: gas, electric, steam and thermal fluid.

#### ADAPTIVE AIR FLOW

The amount of air circulating around the load can be regulated thanks to the incorporation of a frequency inverter to control the fan. The air flow can be adjusted to meet the requirements of drying and of the installation.



#### GAS POWER CONTROL

Gas-heated high-capacity dryers feature instant power control built into the drum. This control, which is automatic and transparent to the user, makes the most efficient use of energy and assures drying quality.

#### ADVANCED STEAM HEATING

In the case of steam heating, and thermal oil heating, an air redirection system is incorporated to allow cool air and thermal oil heating into the drum immediately. This avoids the heat lag effect in the heat battery and at the same time minimises energy use.

The new steel exchangers increase working capacity at fluid pressures (see technical sheet according to model).



# DRYING TWICE AS MUCH IN THE SAME SPACE

The double tumble dryer comes to the ED Series

**EDD300**



**EDD420**



## EDD DOUBLE TUMBLE DRYERS

The EDD Double tumble dryers have been designed and built to meet self-service laundries' needs.

The EDD, following the ED series' elegant design and matching Girbau's washing machines, gives your laundry a sense of quality and consistency.

The stacked configuration saves space in the laundry, allowing more machines to be installed and increasing customer service.

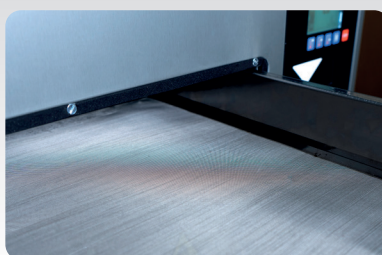
The axial air flow and the double-glazed door increase efficiency and productivity and provide excellent drying results.

The two drum bearing wheels have been designed and tested to withstand tough conditions. Their mechanical robustness and temperature resistance ensure a long service life. In addition, the wheels can easily be accessed from the filter drawer for maintenance tasks.

Possibility of configuring the machine with a stainless steel drum and front and humidity sensor.

- **DOUBLE-GLAZED DOOR FOR INCREASED EFFICIENCY**
- **LARGE FILTER**
- **EMBOSSED DRUM HOLES ENSURE BETTER LINEN CARE.**
- **CONNECTIVITY WITH SAPPHIRE**
- **THE SAME HEATING POWER AS THE ED SERIES.**
- **THE SAME CYCLE TIME AS THE ED SERIES.**
- **THE SAME EFFICIENCY AS THE ED SERIES.**

**The large metal filter allows more lint to be stored without having to clean it as often and making the daily task much easier.**



# HOW SAPPHIRE WORKS



A single **Sapphire Connectivity Box** is enough to connect all the Girbau machines in your laundry.



This device connects your laundry immediately to **the Sapphire cloud** where the information is processed.



Using **the Sapphire web platform** you can monitor, control and configure your laundry.



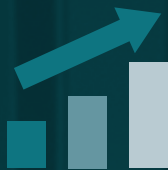


# MAIN BENEFITS



## **MONITORING YOUR BUSINESS**

View your personalised indicators so that you can know at a glance whether your laundry is working properly or needs your attention.



## **MAXIMISE YOUR REVENUE**

Use a series of ready-made reports to assess in which time slots your laundry has least traffic, in order to decide on possible promotions. Be aware of which programmes and extra options are used the least and set the right price to maximise your revenue.



## **CUT IDLE TIMES**

View the status of each of your machines in real time and if one of them sets off an alarm, see the details of the problem, its cause and a possible solution.



## **AVOID UNNECESSARY TRIPS**

Use the activate programme and put machine out of service functions remotely to solve any problems your clients may have, wherever you are.

# Sapphire for owners of vended laundries



## Turnover

Monitor your laundry's turnover remotely in real time and using its history. The calculation is made according to the prices entered for each machine and programme



## Production by cycles

Check your laundry's turnover and number of cycles in real time, including data for each machine. Compare this with the historical average of cycles or turnover



## Machine alarms

Check machine down times. Check a history of alarms, causes and possible solutions. Set up and receive notifications via sms and/or email when a selected alarm is tripped.



## Machine status

Check whether your machines are available, working, pending to be unload, disconnected, out of order or with an alarm active.



## Machine manuals

Consult the specific manuals for each model of your machines easily to take full advantage of their features.



## Activate programme

Avoid unnecessary trips Sapphire enables you to remotely activate a washing, drying or spinning programme for your client, free of charge.



## Put a machine out of service

Avoid unnecessary trips. Sapphire enables you to put a machine out of service remotely when you do not want it to be used, so avoiding subsequent problems. You can also make this machine available again, also remotely.



## Cycles and turnover target

Set targets for your laundry to see whether your business is performing as you expect it to.



## Reports on programmes used

Find out which programmes and extra options are used the most by your clients. Analyse each machine and/or time period to get the most out of your business. On the basis of this, create a price strategy to maximise your profits.



## Contact the technical support service

If an alarm is tripped on a machine, or if you have any other needs, get in touch with the technical support service directly, by telephone or email.







WARNING: FLAMMABLE MATERIAL

15  
kg





Girbau is a multi-national corporation that has cemented its position as one of the global leading groups in the manufacture of innovative solutions for the world of laundry. The goal of Girbau is to create maximum value for its customers, supporting them in their professional growth. The Girbau community supplies simple, dependable solutions that offer its clients profitability, innovation and sustainability.

With more than 60 years of experience as a manufacturer of washing and drying equipment, Girbau provides the most comprehensive offering of commercial, industrial, and vended laundry solutions in the world to meet your individual productivity and efficiency needs.

We want to provide the service and community you need to make your business special. That takes commitment beyond selling machines, and we're willing to walk the extra mile. And beyond all that, we want to help you care for the environment and innovate for the next generation.

These are tall orders, but Girbau can fill them with your help. Help us take laundry beyond laundry. Get in touch today!



# The future is now

[GIRBAU.COM](http://GIRBAU.COM)



## **GIRBAU**