

# FT Series

FOLDERS



**SOLUTIONS FOR FOLDING  
TOWELING LINEN AND AIRLINE BLANKETS**

**GIRBAU**

# FT Series

## Quality and productivity

Girbau has created a range capable of folding any type of article with efficiency and quality, adapting to the demands of each particular laundry.

The size of the laundry items, the type of fold, the material, the level of quality. Each laundry is unique in its requirements and the **FT** Series will provide the answer.

With the **FT** folders, Girbau reinforces its Easy & Best Solutions philosophy: creating flexible laundry packages that are adapted to any sector, so that each customer can easily find the solution they are looking for.

**FTQ**



**FTMAXI**



**FTLITE**



**FTB**



- Productivity
- Quality
- Reliability
- Versatility
- Ergonomics





# Responses to changing markets

Girbau equipment maintains the same level of quality during the washing, drying, ironing and folding processes. The finish provides the final impression to the customer.

This is why Girbau offers a wide range of folding machinery. Every laundry has its particular standard of quality and its own requirements; the fold is not just another step, but is the finishing touch.

## Productivity

**FT** series folders offers the productivity that goes with their way of working. Automatic identification of item size, easy, ergonomic feeding and fast folding shorten the time taken on this process to the minimum, to give higher output and enhanced efficiency.

## Quality

Folding adds to the effect of the final finish. The folded ends of each item line up with the others, aligning piles of items perfectly. Every detail expresses the rigor and professionalism of the laundry. Leave folding to the **FT** Series.







## High Quality Processing & High Production Rate

The **FTQ** means quality, reliability and high production. Production can reach 800 to 1200 items per hour.



## Technology

### Mode of operation

The operator feeds the towel on the feeding conveyor.

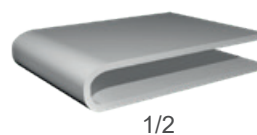
Once the towel is placed on this conveyor, the photocell, placed underneath the feeding conveyor, will give a start signal to run the feeding conveyor.

After feeding, a photocell will measure the length of the towel and the machine will set the programmed folding dimensions.

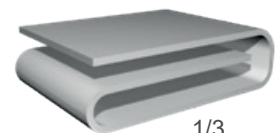
The primary fold is executed by mechanical knives.

### Primary fold

The primary fold is done by a mechanical knives system with blades which are adjusted to match the size of the article. The system can perform 1 fold (in half) or 2 folds (French or 1/3 type).



1/2

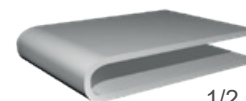


1/3

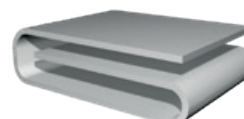
### Secondary fold

The two secondary folds can be performed with air jet or mechanical knives.

Cross folds can be by-passed.



1/2



1/3



2 x 1/2

### Maximum size of articles

Width: 260mm to 1,200mm

Length (2.0): 250mm to 2,000mm

Length (2.4): 250mm to 2,400mm

Folded article width: 130 to 400mm



## Independent feeding table

This folder is fed manually on an independent feeding table. The conveyors halt to allow the operators to feed in the linen, without affecting the production.

In addition, the table is fully ergonomic and is fitted with photocells for pre-detection of garment size, thus reducing machine movements and increasing production capacity.

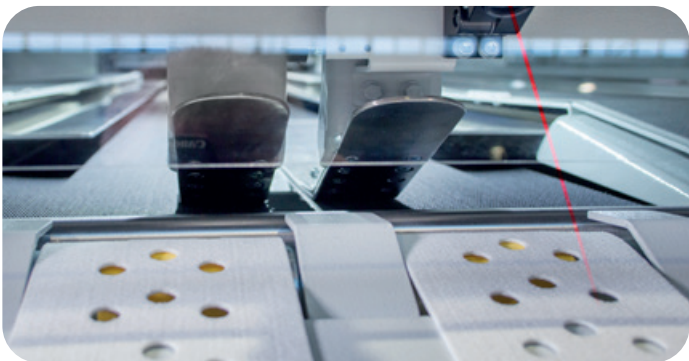
The vacuum feeding table with suction can be ordered as an option.

The feeding table height adjustment is also optional.



## Primary folding with exclusive mechanical knife

A knife system, servomotor driven, allows small and medium-sized articles to be folded without halting the conveyor, thus improving productivity without reducing folding quality.



## Stacking

The **FTQ** automatically recognizes the laundry items and stacks them into three categories (up to four with the 4 stacker option).

The system includes 3 or 4 discharge conveyors that can be configured with its output to the left or to the right, and another conveyor to direct the packages either to the operator or to an expedition conveyor. It is possible to configure the exit to backward or forward direction, according to the requirements.



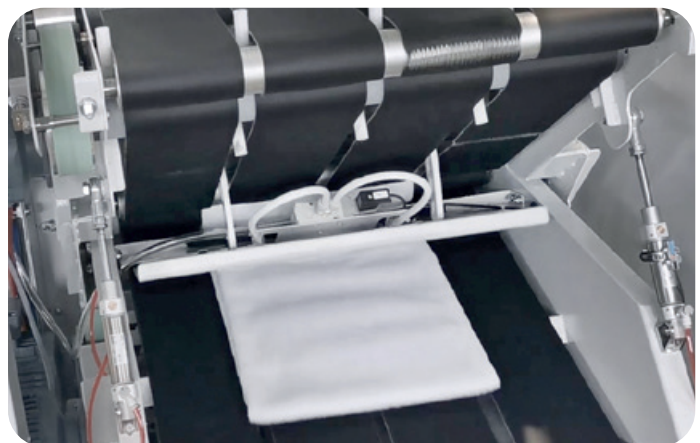
## Easy-to-use touch screen graphic control

It features an agile control and programming system. A system of easy to use icons that guide the user in operating the machine. All Girbau machines incorporate this control, helping operators to learn and develop a range of skills in handling the different equipment.



## Secondary folding using reversing belts and blowing system

In the secondary fold phase, the towels will be pressed by two driven conveyors to ensure a high quality process. The first cross-fold is made by reverse-folding belts in combination with a mechanical knife. The second fold is done by a reverse-folding belt, in combination with a mechanical knife, obtaining high-quality results and a high production rate.



## Options

- **FTQ** is available with 4 stackers (2x660mm + 2x475mm)
- Laser indicator for half folding.
- Vacuum feeding table
- Height adjustable feeding table
- Lighting on primary folding table
- Exit conveyor with double motorization to manage the connection to other conveyors.

# FTMAXI

Quality and productivity at just the right price



Air Jet Folding

## Technology

### Productivity

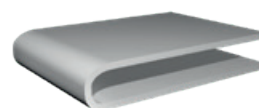
The **FTMAXI** is a multiuse folder designed for folding, classifying and stacking items of toweling or similar.

The **FTMAXI**'s reliability means high productivity. According to the size of the items, production can reach up to 900 pieces/hour, depending on the type of article inserted and the type of folding.

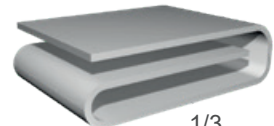
### Primary fold

A blowing system is used for the primary fold, with an air jet that is adjusted to match the size of the article. It can perform

1 fold (in half) or 2 folds (French or 1/3 type).



1/2



1/3

### Maximum size of articles

Width: 260mm to 1,200mm

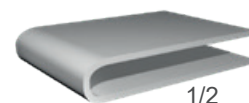
Length (2.4): 250mm to 2,350mm

Folded article width: 130 to 400mm

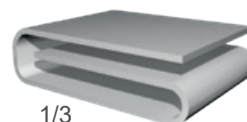
### Secondary fold

A conveyor reversing system, together with a powerful air jet, allows 1 or 2 cross folds to be performed.

The belts used in the cross folding are elastic, contributing to a quality folding and aiding access to the articles in the event of jamming.



1/2



1/3



2 x 1/2

### Versatile and multiuse: designed with your business in mind

The compact design of the **FTMAXI** allows you to make the most of its multiuse features, since it allows a mixture of different sized articles to be inserted while taking up very little room in your laundry (less than 4 meters).



## Independent Feeding Table

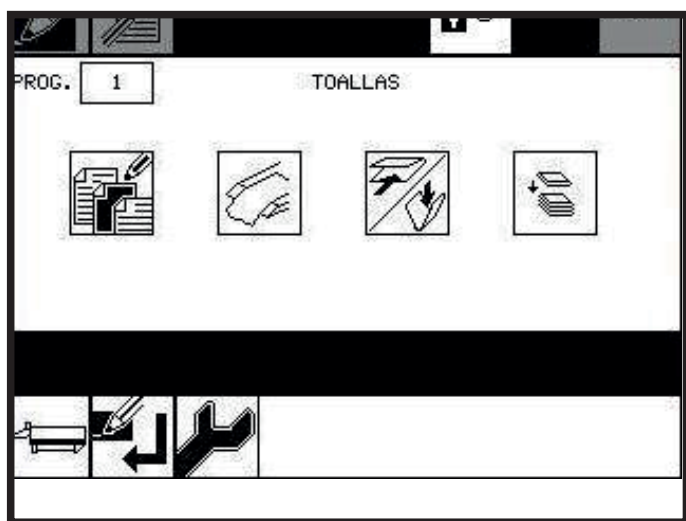
This folder is fed manually on an independent feeding table. The conveyors halt to allow the operators to feed in the linen, without affecting the production.



In this way good quality feeding is assured. The table is also fully ergonomic and height adjustable. Ergonomics and safety are omnipresent in the **FTMAXI**.

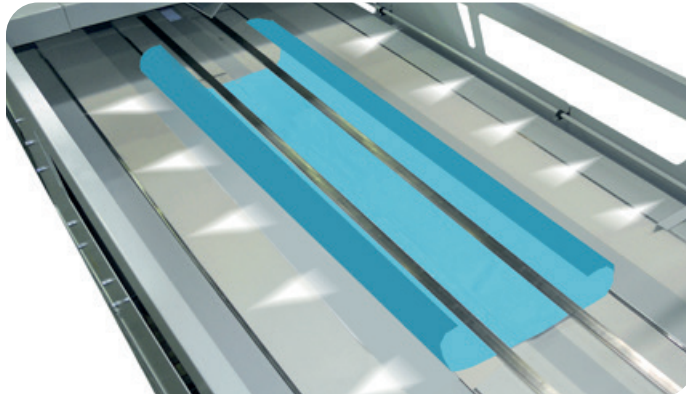
## Easy-to-use touch screen graphic control

The **FTMAXI** folder incorporates a control and programming system. A system of easy to use icons that guide the user in operating the machine. All Girbau machines incorporate this control, helping operators to learn and develop a range of skills in handling the different equipment.



## Primary folding with exclusive blowing system

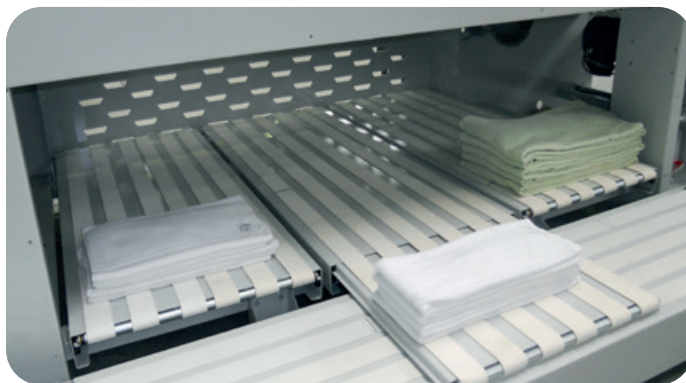
An air jet blowing system allows small and medium-sized articles to be folded without halting the conveyor, thus improving productivity without reducing folding quality.



## Stacking

The **FTMAXI** automatically selects the laundry items and stacks them into three categories (up to four with the 4 stacker option),

The system includes a conveyor to discharge the folded stacks that can be configured with its output to the left or right and in a forward or backward direction, according to the requirements.



## Options

The **FTMAXI** is available with 4 stackers (1 additional to the standard machine) and the discharge conveyor can operate to the right or to the left.

600 mm wide stackers are available optionally.



# FTLITE

## Economy and simplicity in a compact form

The **FTLITE** is designed for folding towels and other articles of toweling , airline blankets and similar items. In addition, it accepts everything from small articles to large-scale items.



## Technology

### Primary folding with blowing system and reversing belt

In the first 2 cross folds, reversal and a blowing system are used, while the final fold is performed with reversal and knife.

These folds are carried out without stopping the belts, thereby achieving an optimum treatment of the linen and a high productivity.



### Maximum size of articles

(1,200mm x 2,400mm)



### Secondary fold with stacker (stack & fold)

The secondary half fold is performed with a rotary stacker (stack & fold). The piles return from the stacker to the operator position on a discharge belt.

### Manual feeding

The feeding is performed manually on the feeding table. The table is fitted with indicators that aid in centering the item.

### Easy-to-use touch screen graphic control

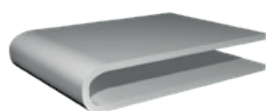
The **FTLITE** features an easy to use touch screen control system in color, together with the basic operating programs.



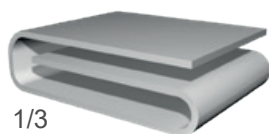


## Primary fold

The **FTLITE** performs 1, 2 and even 3 primary folds. The primary fold can be configured for folding the article in half (1/2) or for a French type fold (1/3).



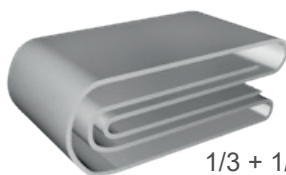
1/2



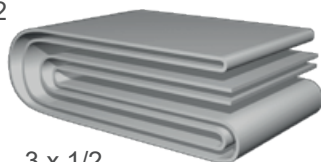
1/3



2 x 1/2

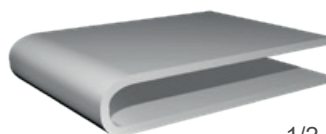


1/3 + 1/2



3 x 1/2

## Secondary fold and stacking



1/2

The **FTLITE** folder performs a half cross fold with a rotary stacker (stack & fold). This fold is compulsory. The items return from the stacker to the operator on a discharge belt.



# FTB

## For users who do not require stacking to be classified

Simplicity for users who do not require classification.

The FTB has all the functions of the **FTMAXI**, but with only one output, which simplifies its design and reduces its cost.

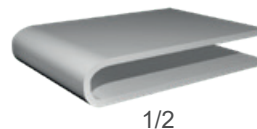


## Adapted to your requirements

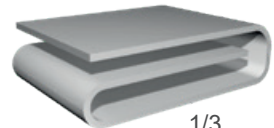


### Primary fold

A blowing system is used for the primary fold, with an air jet that is adjusted to match the size of the article. It can perform 1 fold (in half) or 2 folds (French or 1/3 type).



1/2



1/3

### Productivity

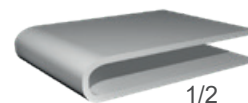
The **FTB** is a multiuse folder designed for folding and stacking items of toweling or similar.

The reliability of the **FTB** is combined with a high productivity. According to the size of the items, production can reach up to 900 pieces/hour, depending on the type of article inserted and the type of folding.

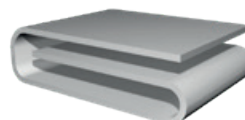
### Secondary fold

A conveyor reversing system, together with a powerful air jet, allows 1 or 2 cross folds to be performed.

The belts used in the cross folding are elastic, contributing to a quality folding and aiding access to the articles in the event of jamming.



1/2



1/3



2 x 1/2

### Maximum size of articles

Width: 260mm to 1,200mm

Length (2.4): 250mm to 2,350mm

Folded article width: 130 to 400mm



**GIRBAU**







Girbau is a multi-national corporation that has cemented its position as one of the global leading groups in the manufacture of innovative solutions for the world of laundry. The goal of Girbau is to create maximum value for its customers, supporting them in their professional growth. The Girbau community supplies simple, dependable solutions that offer its clients profitability, innovation and sustainability.

With more than 60 years of experience as a manufacturer of laundry equipment, Girbau provides the most comprehensive offering of commercial, industrial, and vended laundry solutions in the world to meet your individual productivity and efficiency needs.

We want to provide the service and community you need to make your business special. That takes commitment beyond selling machines, and we're willing to walk the extra mile. And beyond all that, we want to help you care for the environment and innovate for the next generation.

These are tall orders, but Girbau can fill them with your help. Help us take laundry beyond laundry. Get in touch today!



# Beyond Laundry

GIRBAU.COM



# GIRBAU